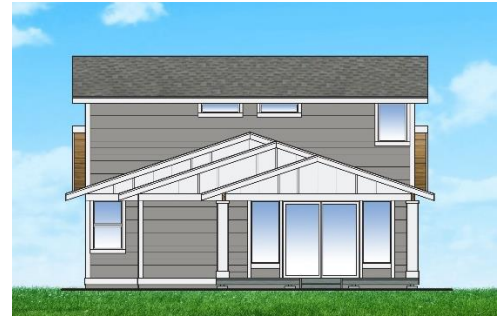




THE VILLAGE
Sequim, Washington

**UNDER
CONSTRUCTION**

The Aurora Peak



Features

- 3 Bedroom, 2.5 Bath
- 2032 SqFt Interior Living Space
- 107 SqFt Covered Front Porch
- 163 SqFt Rear Outdoor Room
- 473 SqFt Attached 2-Car Garage

\$425,900

The Aurora Peak is named after the summit in Olympic National Park which is the highest point on Aurora Ridge. Its northern side towers above Lake Crescent, the southern above the Sol Duc River. The Aurora Ridge Trail follows along the ridgeline providing scenic views.

As seen at

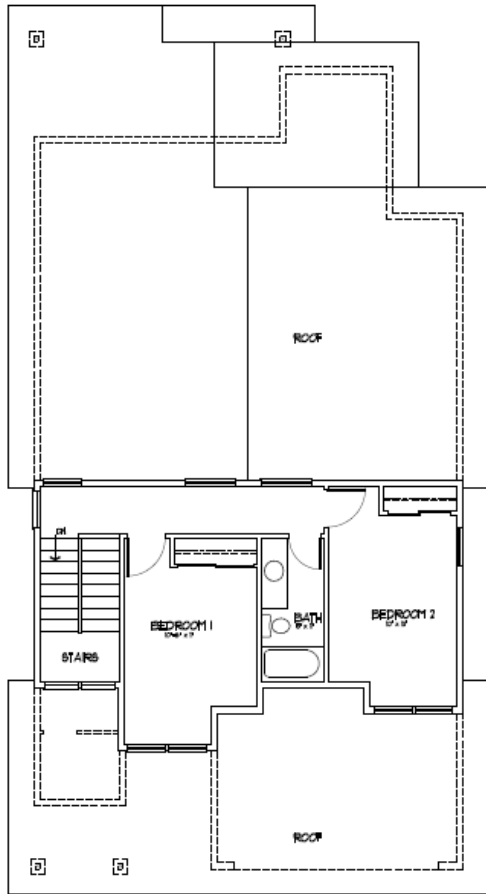
410 Lofgrin Rd

This lovely 2032 square feet two-story offers 1409 sqft of main level living—including a spacious master bedroom with walk-in closet, great room, walk-in pantry and laundry. Two additional bedrooms and bath provide seclusion by design on upper level and offer a bird's nest view for office or guest visits. Both levels benefit from 9'H ceilings and ample natural light. Front porch begs for a porch swing, and finishes suggest a soothing coastal theme in colors of driftwood, sea and sand. Enjoy a gorgeous kitchen with quartz counters, stainless steel appliances, and European frameless cabinetry with soft-close doors and drawers. This well-appointed home provides quality and detail at an exceptional value.

Community Features

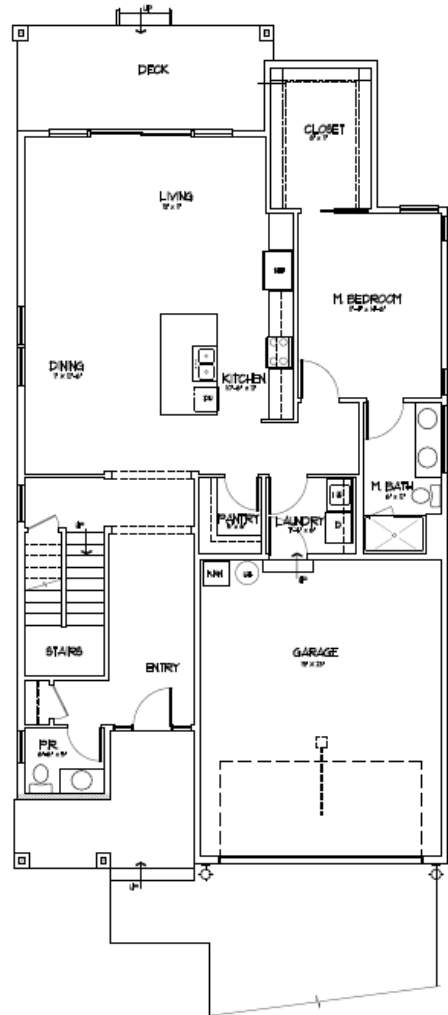
- Community clubhouse with Wi-Fi internet, fitness room, full kitchen, meeting rooms and an expansive deck overlooking the pond
- Streetside landscaping
- Excellent walking trails
- Large open space, buffer areas, pond, fountains, water features
- Only minutes to QFC Shopping Center, John Wayne Marina, 7 Cedars Casino and mere walking distance to the Olympic Discovery Trail
- Convenient access to Hwy 101

The Aurora Peak



UPPER FLOOR PLAN

623 sqft



LOWER FLOOR PLAN

1409 sqft